

# CAPITAL COAST AND COUNTRY

## SELF-DRIVE GUIDE



CANBERRA | TABLELANDS | SOUTHERN HIGHLANDS  
SNOWY MOUNTAINS | SOUTH COAST

## CAPITAL, COAST AND COUNTRY TOURING ROUTE LEGEND

- Taste the Tablelands
- Experience the Southern Highlands
- Explore Australia's Highest Peak
- Enjoy Beautiful Coastlines
- Discover Sapphire Waters and Canberra's Nature Coast



## KEY FACTS

States covered: Australian Capital Territory (Canberra), New South Wales

**Challenge Level:** ✓✓✓✓✓

**Flight gateway:** Canberra or Sydney

**Highlights:** A visit to Canberra and beyond offers an unforgettable driving experience through spectacular coastlines, picturesque historic townships, pristine national parks, world-class national attractions and gourmet food and wine.

### DRIVING DISTANCES (APPROX.)

From	To	Time	Km	Miles
Canberra	Sydney Airport	2 hrs 50 mins	273	170
	Bowral	1 hr 52 mins	170	105
	Murrumbateman	35 mins	39	24
	Yass	50 mins	70	43
	Young	1 hr 53 mins	158	98
	Batemans Bay	1 hr 59 mins	149	93
	Mollymook	2 hrs 47 mins	205	128
	Jervis Bay	2 hrs 55 mins	222	138
	Merimbula	2 hrs 55 mins	243	151
	Eden	3 hrs 13 mins	265	165
	Jindabyne	2 hrs	179	111





# VISIT CANBERRA



Australia's young and vibrant capital is the perfect place to base yourself to explore the wider region on a self-drive holiday. Whether it's world-class wining and dining, iconic national treasures that tell the story of Australia or breathtaking outdoor adventures, everything is just moments away. And just a short drive away are the pristine beaches of the South Coast and the beautiful Snowy Mountains. We've put together some must-do Canberra highlights before you set off.

## MUST DO

### ARTS AND CULTURE

- At the National Gallery of Australia view the country's national art collection that includes the largest collection of Indigenous artwork in the world.
- Get a snapshot of Australia's past, present and future at the National Museum of Australia.
- Watch democracy in action at Parliament House.
- Experience the moving Last Post ceremony at the Australian War Memorial — one of the world's great war museums.

### OUTDOORS AND NATURE

- Get back to nature at Tidbinbilla Nature Reserve and see wallabies, kangaroos, emus and other wildlife in a natural setting.
- Admire the capital's 'city in a park' charm as you rise above it at dawn in a hot air balloon.
- Get adventurous and explore Lake Burley Griffin surrounds on a segway, cross the lake on a pedal kayak or Goboat, or hit the downhill mountain bike trails of Mount Stromlo.

### FOOD AND WINE

- Explore the foodie hubs of the waterfront Kingston foreshore or Braddon's hip Lonsdale Street precinct which feature casual bars, cafes and restaurants and local craft beer and wine.
- Explore 30 boutique cellar doors in Canberra's cool climate wine region, only 35 minutes' drive from the city.
- Head to the local weekend markets like the Capital Region Farmers Market for fresh, regional produce. On a Sunday, stop by to the Old Bus Depot Markets for local produce, art, craft, clothing and more.

### FAMILY FUN

- Uncover the mysteries of science with fun, interactive experiences at the Australian Tourism Award winning science centre Questacon.
- Strike your own coin, and watch Titan the robot in action as he helps make Australia's coins at the Royal Australian Mint.
- Cuddle a dingo, walk inside an enclosure with kangaroos and emus at the National Zoo & Aquarium.



## EVENT PICKS

From blockbuster art exhibitions to the annual spectacle of massed hot air balloons floating above the city, Canberra offers a diverse calendar of not to be missed events. Below are five must-see annual events. For a comprehensive list of events go to [visitcanberra.com.au](https://visitcanberra.com.au)

### ENLIGHTEN FESTIVAL

**Across Canberra, March**

This 18 day festival encompasses a number of events that include the illumination of some of Canberra's most iconic buildings such as Parliament House, National Gallery of Australia, Old Parliament House, National Portrait Gallery and Questacon. You'll also find an array of quirky after-dark events, noodle markets, music and roving performers. [enlightenfestival.com](https://enlightenfestival.com)

### CANBERRA BALLOON SPECTACULAR

**Old Parliament House, March**

See a stunning array of hot air balloons of all colours and novelty shapes inflate at dawn and slowly drift over Canberra's iconic national attractions. Catch the action on the ground with live music and breakfast. You can also book a balloon flight and take part in the spectacle. [balloonspectacular.com.au](https://balloonspectacular.com.au)

### THE TRUFFLE FESTIVAL

**Canberra Region various venues, June to August**

A 12-week celebration of the harvest of the Black Winter Truffle grown in the Canberra region. More than 250 individual events are held across the region offering the opportunity to taste and experience the prized truffle. Events range from gourmet degustation dinners, cooking classes and demonstrations, to wine tastings and matchings, farmers markets, truffle hunts and more. [trufflefestival.com.au](https://trufflefestival.com.au)



### FLORIADE AND FLORIADE NIGHTFEST

**Commonwealth Park, mid-September to mid-October**

See the biggest free spring flower festival in the Southern Hemisphere when more than one million spring blooms carpet the city's lakeside park. Flowers, food, entertainment and art combine over 30 days. For two weekends you can see the festival illuminated at the after-dark Floriade NightFest (a ticketed event). [floriadeaustralia.com](https://floriadeaustralia.com)



#### CANBERRA AND REGION VISITORS CENTRE

Regatta Point Canberra, ACT 2600

T: +61 2 6205 0044 | [crvc@act.gov.au](mailto:crvc@act.gov.au) | [visitcanberra.com.au](https://visitcanberra.com.au)





# TASTE THE TABLELANDS

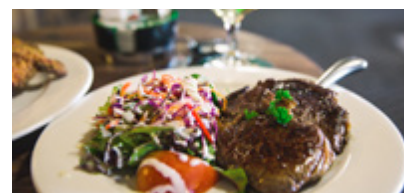
## CANBERRA–MURRUMBATEMAN–YASS–YOUNG

With its proximity to Canberra, the tablelands are easily accessible and the towns and villages provide connections to the sense of place, just waiting to be explored.

The food, wine and natural handmade products in the region are world class. From farm fresh produce, to restaurants, cafes, vineyards and cellar doors, the tablelands boast a feast of impressive quality produce. Meet the makers of the tablelands and visit the wine regions of Canberra District and Hilltops.

## MUST DO

- Visit the cool climate wine region of Murrumbateman, with more than 20 boutique wineries now achieving acclaim on Australian and International tables. Every cellar door provides a different and exciting experience.
- Soak up the history of Yass as you discover the mid 1800s architecture evident in the town's main street.
- Dine at some the region's best restaurants in Yass, Murrumbateman and Gundaroo including the acclaimed Clementine Restaurant recently acknowledged as a "One Hat" restaurant. Dining experiences focus on a paddock to plate philosophy featuring local produce matched with local wines.
- The Hilltops towns of Harden and Boorowa offer country pubs and heritage buildings; browse antiques and crafts shops, enjoy Devonshire Teas with homemade scones and berry jams.
- Young is Australia's Cherry Capital, during November and December you can pick your own fruit or buy direct from the Orchard. Delicious Cherry pies are available throughout the year.
- The village of Jugiong is the embodiment of Hilltops food and wine with a series of fine food and wine options, much loved by locals and visitors alike.



### DRIVING DISTANCES (APPROX.)

From	To	Time	Km	Miles
Canberra	Murrumbateman	35 mins	39	24
	Yass	50 mins	70	43
	Young	1 hr 53 mins	158	98



### YASS VALLEY INFORMATION CENTRE

259 Comur Street, Yass NSW

T: +61 2 6226 2557 | [tourism@yass.nsw.gov.au](mailto:tourism@yass.nsw.gov.au) | [yassvalley.com.au](http://yassvalley.com.au)



### YOUNG & HILLTOPS REGION INFORMATION CENTRE

Anderson Park, Young NSW 2594

T: +61 2 6382 3394 | [vic@hilltops.nsw.gov.au](mailto:vic@hilltops.nsw.gov.au) | [visithilltopsregion.com.au](http://visithilltopsregion.com.au)



# EXPERIENCE THE SOUTHERN HIGHLANDS

## CANBERRA–BOWRAL–SYDNEY

Uncover an experience that is So Close yet a World Away in the picturesque Southern Highlands region. The region boasts stunning and distinct seasons, breathtaking waterfalls and endless nature, award winning cool climate food and wine and a rich heritage and historical past. You will also find magnificent gardens, an antiquarian booktrail, boutique and specialty shops, renowned artisans and art studio trail, challenging championship golf courses, numerous cycle tracks and scenic tourist drives.

## MUST DO

- Fall in love with the regions three magnificent waterfalls which line the sandstone escarpment country in Fitzroy Falls, Belmore Falls and Carrington Falls.
- Bowral is the home of the Bradman Centre and International Cricket Hall of Fame as well as the birthplace of Mary Poppins and its author PL Travers. The world's greatest cricketer, Sir Donald Bradman, grew up and honed his cricketing skills here.
- Visit Historic Berrima village (1831) which is recognised as one of Australia's best preserved towns of yesteryear with its picturesque sandstone Georgian architecture.
- The Surveyor General Inn is the oldest continuously licenced pub in Australia.
- Drop into one of our 13 cellar doors and experience award winning cool climate wines and the regions signature Pinot Noir.
- Explore, climb and zipline one of Australia's premier treetop walks at the Illawarra Fly Tree Top Walk perched over the rainforest and views of the Pacific Ocean.
- Experience a mouth-watering Highlands pie at one of the 30 or more bakeries scattered throughout 'Australia's Home of Pies'.



### DRIVING DISTANCES (APPROX.)

From	To	Time	Km	Miles
Canberra	Bowral	1 hr 52 mins	170	105
	Sydney	3 hrs	286	178



### SOUTHERN HIGHLANDS WELCOME CENTRE

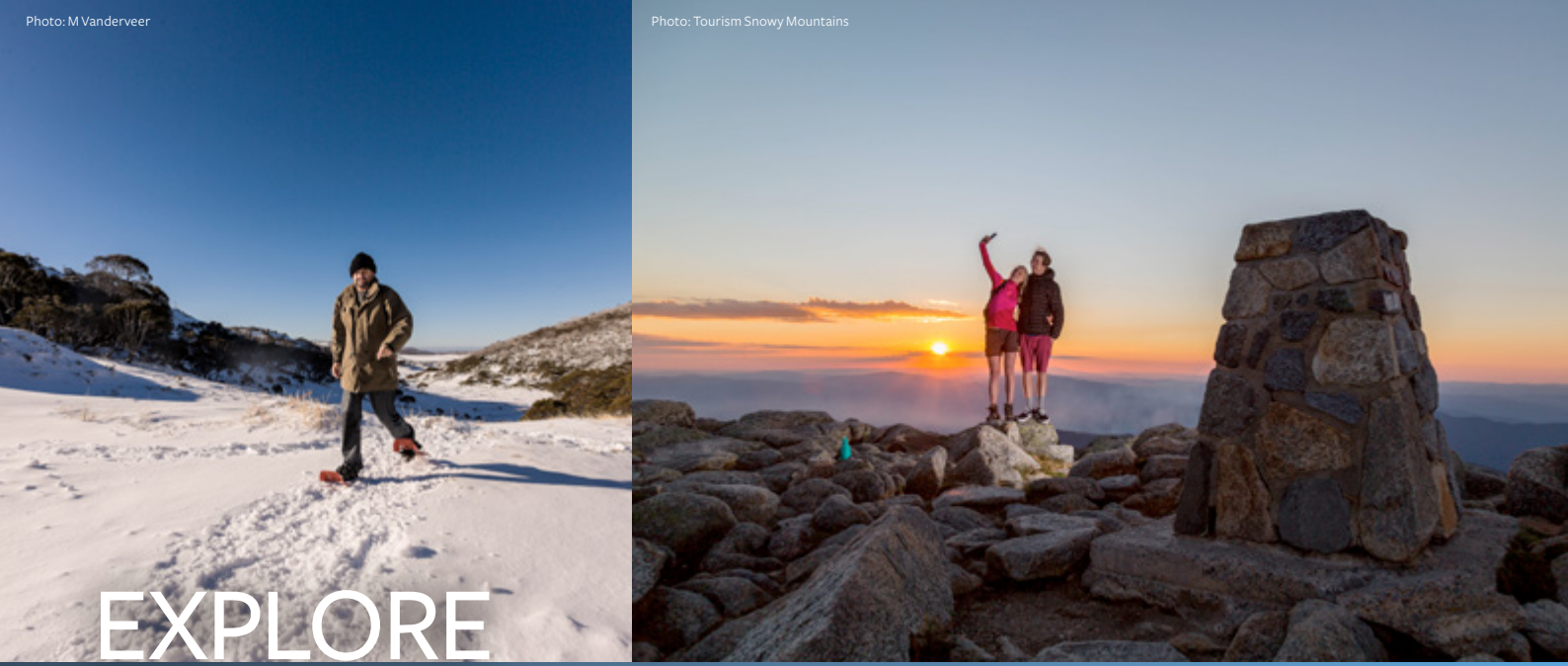
62-70 Main Street, Mittagong NSW 2575 | T: +61 2 4871 2888  
[destination@wsc.nsw.gov.au](mailto:destination@wsc.nsw.gov.au) | [visitsouthernhighlands.com.au](http://visitsouthernhighlands.com.au)



### FITZROY FALLS VISITOR CENTRE

Morton National Park, Nowra Road, Fitzroy Falls NSW 2577  
9am-5pm daily (closed Christmas Day) | T: +61 2 4887 7270 / +61 2 4887 7203





# EXPLORE AUSTRALIA'S HIGHEST PEAK

## CANBERRA–GUNDAGAI–TUMUT–YARRANGOBILLY– JINDABYNE–PERISHER / THREDBO–COOMA

Kosciuszko National Park is home to Australia's highest mountain and Australia's first Eco certified Destination. Winter or summer, this is the ideal location for snow sports, cycling, camping or cave tours, hiking, fishing or horse riding; amidst Australia's unique flora and fauna and spectacular alpine scenery.

### MUST DO

- Visit Yarrangobilly Caves in the northern section of Kosciuszko National Park, which features a unique Karst landscape. Take a guided or self-guided Yarrangobilly Caves Tour and learn about the fascinating history of the caves and spiritual beauty of local Aboriginal Culture.
- In winter, ski or snowboard the slopes at Thredbo, Perisher or Charlotte Pass. Try cross country skiing or snowshoe the pristine trails amongst twisted snow gums.
- For the summer adventurer, take on the Mount Kosciuszko Summit walk from Charlotte Pass or the Kosciuszko walk — Thredbo to Mount Kosciuszko and soak in the epic views from Australia's highest point.
- Kosciuszko National Park is a mecca for mountain bikers, and new world class Thredbo Valley track is one of its most popular (and easiest) adventures on two wheels.
- Kosciuszko National Park has a range of accommodation options to choose from including Creel Lodge on the banks of Lake Jindabyne or the stunning Yarrangobilly Caves House featuring a thermal pool.

#### DRIVING DISTANCES (APPROX.)

From	To	Time	Km	Miles
Canberra	Gundagai	1 hr 45 mins	159	99
	Tumut	2 hrs	190	118
	Yarrangobilly	3 hrs	267	165
	Jindabyne	2 hrs	179	111
	Thredbo	2 hrs 30 mins	214	132
	Cooma	1 hr 26 mins	117	72



#### KHANCOBAN VISITOR CENTRE

Corner Scammell Street & Alpine Way,  
Khancoban NSW 2642  
+ 61 2 6076 9373  
9am–4pm Mon–Fri (closed 12.30pm–1pm)  
Open daily during peak summer  
season and school holidays.



#### SNOWY REGION VISITOR CENTRE — JINDABYNE

49 Kosciuszko Road, Jindabyne NSW 2627  
+ 61 2 6450 5600  
8.30am–5pm daily  
(closed Christmas Day)  
[srvcc@environment.nsw.gov.au](mailto:srvcc@environment.nsw.gov.au)



#### TUMUT VISITOR CENTRE

The Old Butter Factory,  
5 Adelong Road, Tumut NSW 2720  
+ 61 2 6947 7025  
9am–5pm daily  
(closed Christmas Day)  
[tumutrvcc@environment.nsw.gov.au](mailto:tumutrvcc@environment.nsw.gov.au)



#### YARRANGOBILLY CAVES VISITOR CENTRE

Yarrangobilly Caves Entrance Rd,  
off Snowy Mountains Highway,  
Yarrangobilly Caves NSW 2720  
+ 61 2 6454 9597  
Contact hours: 9am–5pm daily  
(closed Christmas Day)



# ENJOY BEAUTIFUL COASTLINES

## CANBERRA–MOLLYMOOK–JERVIS BAY–NOWRA– KIAMA–WOLLONGONG–SYDNEY

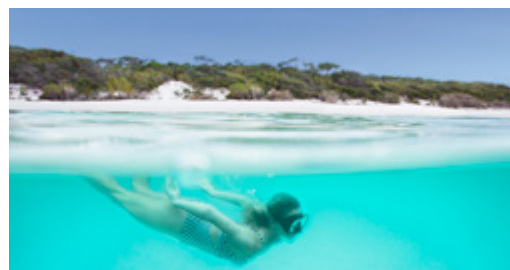
With over 100 beaches to explore, the NSW coast line is calling, through Shoalhaven and the Grand Pacific Drive. Sip a glass of local wine while breathing in the coastal air, or get the blood pumping with one of the many adventure activities.

Charming coastal towns make shopping a dream, nestled near award-winning wineries, hatted restaurants and surf beaches of champions. Wake up near world famous white sand beaches and meet the resident dolphins of Jervis Bay where the bush meets the beach, or fall asleep to the crashing waves of world class surf beaches. Just two hours from both Sydney and Canberra, the unspoilt Shoalhaven is a nature and adventure lover's paradise.

Travel on the Grand Pacific Drive in either direction and enjoy breathtaking scenery and some of the most beautiful beaches and rock pools in Australia.

### DRIVING DISTANCES (APPROX.)

From	To	Time	Km	Miles
<b>Canberra</b>	Batemans Bay	1 hr 59 mins	149	93
<b>Canberra</b> (via Batemans Bay)	Mollymook	2 hrs 39 mins	199	124
	Jervis Bay	3 hrs 56 mins	290	181
	Kiama	4 hrs 9 min	308	192
	Nowra	3 hrs 34 mins	266	165
	Wollongong	4 hrs 37 mins	346	215
	Sydney	5 hrs 55 mins	435	270







## MUST DO

- Take the Main Road 92 to Jervis Bay Marine Park, a favourite for whales, snorkelling, kayaking and friendly kangaroos.
- Try on Aussie surf culture for size, or even get up on a board at one of our many friendly surf schools.
- Visit charming heritage towns like Berry, Milton and Kangaroo Valley for great food and shopping, nestled in picturesque Australian countryside.
- Try glamping, and enjoy a holiday under the stars nearby one of 100 beaches including some of the whitest sands in the world.
- Stay in boutique luxury at Bannisters by the Sea and indulge in celebrity chef Rick Stein's restaurant and award-winning pool bar in Mollymook.
- Taste wine just minutes from the beach at one of many award-winning wineries, from Cupitt in Ulladulla to Coolangatta Estate in Shoalhaven Heads.
- Experience the dramatic Kiama Blowhole and Little Blowhole where the Pacific Ocean meets the land.
- Royal National Park is Australia's oldest national park. Only an hour from Sydney CBD it offers everything from beaches to rainforests.
- Explore the subtropical Minnamurra Rainforest, featuring spectacular waterfalls and elevated boardwalks taking you right into the 400 hectare rainforest.
- Visit Nan Tien Temple, known as the 'Southern Paradise', the largest Buddhist temple in the Southern Hemisphere.
- For a real thrill, experience skydiving with Skydive the Beach and Beyond in Wollongong.
- Enjoy spectacular ocean views and dramatic coastlines from the Sea Cliff Bridge and Bald Hill Lookout, an internationally renowned hang gliding point.
- Symbio Wildlife Park is the place to go if you want to cuddle up to Koala's, hand feed and pat Kangaroos, meet Wombats, Echidnas, Emus and other rare exotic animals.
- Set on 100 acres at Darkes Forest, Glenbernie Apple Orchard offers seasonal picking, fresh fruits and preserves — bookings essential.



### BATEMANS BAY VISITOR CENTRE

Princes Highway  
Batemans Bay NSW 2536  
T: +61 2 4472 6900  
info@eurobodalla.com.au  
eurobodalla.com.au



### KIAMA VISITOR CENTRE

Blowhole Point Road  
Kiama NSW 2533  
T: 1300 654 262  
tourism@kiama.com.au  
kiama.com.au



### SHOALHAVEN VISITOR CENTRE

42 Bridge Road, Nowra NSW 2541  
T: +61 2 4421 0778  
tourism@shoalhaven.nsw.gov.au  
shoalhaven.com.au



### ULLADULLA VISITOR INFORMATION CENTRE

Civic Centre, Princes Highway  
Ulladulla NSW, 2539  
T: +61 2 4444 8819  
ullavisitor@shoalhaven.nsw.gov.au  
shoalhavenholidays.com.au



### WOLLONGONG VISITOR CENTRE

Southern Gateway Centre: Bulli Tops  
93 Crown Street,  
Wollongong NSW 2500  
T: +61 2 4267 5910  
tourism@wollongong.nsw.gov.au  
visitwollongong.com.au



# DISCOVER SAPPHIRE WATERS

## CANBERRA–BEGA–EDEN–MERIMBULA–BERMAGUI

Discover this hidden pocket of Australia's epic coastline where you can reconnect and share your love of nature. Immerse yourself in the lush network of national parks that dominate the landscape, explore the ancient coastal wilderness and sapphire waters that are home to unparalleled marine riches that include the East coast's best whale watching at Eden and pristine seafood and oysters.

### MUST DO

- Take off on a spectacular spring Whale Watching experience on the 'Humpback Highway' at Eden. A few minutes by boat is all it takes to see mother and calves at play.
- Take a tour of the historic Davidson's Whaling Station or spot whales from Boyd's Tower.
- The unspoilt waters of the coast are the catalyst for sublime and award-winning oysters — take a tour with an oyster farmer or just sample some at one of the fine local restaurants.
- On a kayak tour in one the many tranquil estuaries that dot the coast, you will have dolphins and sea eagles as your only companions.
- Take a walk on one of the coastal wilderness tracks leading to deserted pristine beaches.
- Visit one of the many sites telling the dramatic whaling stories of days gone by.
- Challenge yourself with a marlin fishing trip from the game fishing mecca of Bermagui.
- Head to Ben Boyd National Park to walk the Pinnacles loop and see kangaroos and wallabies.
- Nearby Mimosa Rocks National Park is perfect for camping and bush walking. Visit [sapphirecoast.com.au](http://sapphirecoast.com.au) for more information.

#### DRIVING DISTANCES (APPROX.)

From	To	Time	Km	Miles
Canberra	Cooma	1 hr 19 mins	117	110
	Bega	2 hrs 47 mins	229	142
	Merimbula	2 hrs 55 mins	243	151
	Eden	3 hrs 13 mins	265	165
	Bermagui	3 hrs 18 mins	278	173



#### BERMAGUI VISITOR INFORMATION CENTRE

1 Bunga Street, Bermagui NSW 2551 | T: +61 2 6493 3054  
[vic@bermaguichamber.org.au](mailto:vic@bermaguichamber.org.au) | [visitbermagui.com.au](http://visitbermagui.com.au)



#### EDEN GATEWAY VISITOR INFORMATION CENTRE

Princes Hwy and Mitchell Road, Eden NSW 2551 | T: +61 2 6496 1953  
[info@visiteden.com.au](mailto:info@visiteden.com.au) | [visiteden.com.au](http://visiteden.com.au)



#### MERIMBULA VISITOR CENTRE

29 Market St, Merimbula NSW 2548 | T: 1800 150 457  
[info@merimbulatourism.com.au](mailto:info@merimbulatourism.com.au) | [merimbulatourism.com.au](http://merimbulatourism.com.au)





# EXPLORE CANBERRA'S NATURE COAST

## CANBERRA–BATEMANS BAY–NAROOMA–TILBA VALLEY

Four mighty river systems, 83 uncrowded beaches, vast tracks of national parks and forests, 20 islands, quaint villages, an abundance of wildlife and stunning ancient headlands. You'll enjoy the scenic two-hour drive from the capital to Canberra's Nature Coast.

As you arrive into Batemans Bay you are greeted by the mighty Clyde River, a mecca for oysters, fishing and family holidays. In the south, Narooma is home to world famous Montague Island, a breeding ground for thousands of migratory birds, little penguins, marine life and huge colonies of resident fur seals. Kangaroos, wallabies, emus, game fishing, island tours, kayaking, cycling — the list is endless of things to see and do on this nature intensive route.

## MUST DO

- Explore the mighty Clyde River in a kayak, take a cruise to historic Nelligen or head out past the Tollgate Islands for some serious game fishing.
- Travel the scenic coastal road to Mogo and visit the zoo, a gold rush theme park and shop in the village.
- Moruya is renowned for its Tuesday farmer's market, Saturday country market and the granite used in the Sydney Harbour Bridge and other Sydney icons.
- Walk in the steps of the Brinja-Yiun people on the Bingi Dreaming Track or head to historic Bodalla for some freshly made cheese, yoghurt and homemade ice-cream.
- Visit Tuross Head to spy emus and dolphins. Swim, cycle, kayak, fish, surf, play bowls or a round of golf, or relax on the lakes edge feeding schools of fish.
- Take a tour from Narooma to Montague Island to explore the historic lighthouse, swim or dive with friendly seals or stay overnight in beautifully restored lighthouse keeper's cottages.
- Step back in time in Tilba Valley for boutique shopping, some amazing dairy products made from local jersey cows or hike to the summit of culturally significant Gulaga.

### DRIVING DISTANCES (APPROX.)

From	To	Time	Km	Miles
Canberra	Batemans Bay	1 hr 58 mins	149	93
	Mogo	2 hrs 6 mins	158	98
	Tuross Head	2 hrs 32 mins	193	120
	Bodalla	2 hrs 39 mins	200	124
	Narooma	2 hrs 56 mins	220	136
	Tilba Valley	3 hrs 9 mins	235	146



### BATEMANS BAY VISITOR CENTRE

Princes Highway Batemans Bay 2536 | T: 1800 802 528  
info@eurobodalla.com.au | [eurobodalla.com.au](http://eurobodalla.com.au)



### NAROOMA VISITOR CENTRE

Princes Highway Narooma 2546 | T: +61 2 4476 2881  
info@eurobodalla.com.au | [eurobodalla.com.au](http://eurobodalla.com.au)

